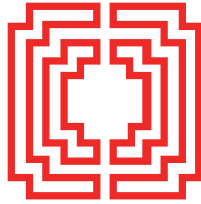


Wenzhou Kangning Hospital Co., Ltd. 2017 Annual Report



温州康宁医院股份有限公司

Wenzhou Kangning Hospital Co., Ltd.

(A joint stock limited liability company incorporated in the People's Republic of China)

Stock code: 2120

2017年12月31日

1 目录

- 1.1 资产负债表
- 1.2 利润表

3 BINE, EIE AND L K

2017,

2017,
2017

2016,

A 30, 2017,
10 (31, 2016: 8)
3,050 (31, 2016: 2,577).

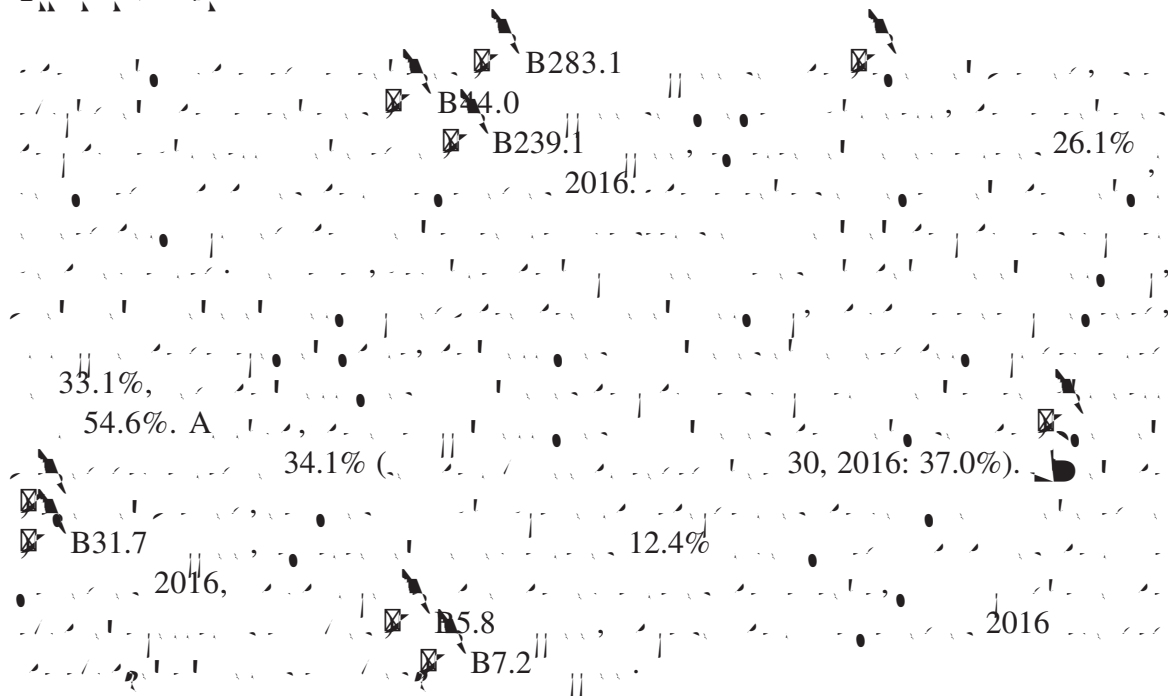
2017,
280. , B.

A 30, 2017,
8 (31, 2016: 6)
1,100 (31, 2016: 790).

2017,
A
A
()

4 MANAGEMEN DI C... I N AND ANAL I

4.1 F...



4.1.1 C...

... () ... () ... () ... ()

Financial Statement

	Fiscal Year ended June 30, 2017 (MB'000)	2016 (B'000)
☑	226,529	178,979
☑	11,579	8,838
☑	987	1,863
	<hr/>	<hr/>
☑	239,095	189,680
☑	44,041	
	<hr/>	<hr/>

	F 2017	J 2016
	3,050	2,300
	552,050	418,600
(%)	85.9%	88.6%
	474,163	370,702
(B'000)	158,561	121,743
(B)	334	329
(B'000)	28,427	21,980
(B)	60	59
(MB'000)	186,988	143,723
(MB)	394	388
	75,872	68,875
(B'000)	7,665	7,673
(B)	101	112
(B'000)	31,876	27,583
(B)	420	400
(MB'000)	39,541	35,256

F, J, 30,
2017 2016

<p>☒ (MB)</p> <p>☒ (MB'000)</p> <p>☒ (MB'000)</p>	<p><u>524</u></p> <p><u>166,226</u></p> <p><u>60,303</u></p>	<p><u>512</u></p> <p><u>129,416</u></p> <p><u>49,563</u></p>
---	--	--

☒ B187.0

2016, () 30.1% 27.9%

() 1.6%

() 82.5%

() 30, 2016: 80.3%.

☒ B39.5

2016, () 12.2% 10.2%

() 2.3%

() 17.5%

30, 2016: 19.7%),

00.45(10.)5.8(10.)39.5(0.) (0)2.020.728)0 250(001

2017年12月31日
 2016年12月31日

	2017 (MB'000)	2016 (B'000)
流动资产	58,173	48,086
非流动资产	50,903	39,834
流动资产减去非流动资产	9,857	4,785
流动资产减去非流动资产	13,642	7,103
流动资产减去非流动资产	8,120	6,544
流动资产减去非流动资产	4,182	2,180
流动资产减去非流动资产	6,756	6,094
流动资产	151,633	114,626

流动资产 B151.6 2016, 32.3%
 流动资产 () 21.0%
 流动资产 () 27.8%
 流动资产 B11.6
 流动资产 A 2016, 97.7%

流动资产 38.4% ()
 流动资产 30, 2016: 42.0%
 流动资产 33.6%
 流动资产 30, 2016: 34.8%
 流动资产 15.5%
 流动资产 30, 2016: 10.4%
 流动资产 2016.

2017
 2016

	2017 (MB'000)	2016 (B'000)
	11,579	8,838
	5,252	4,319
	<u>6,327</u>	<u>4,519</u>

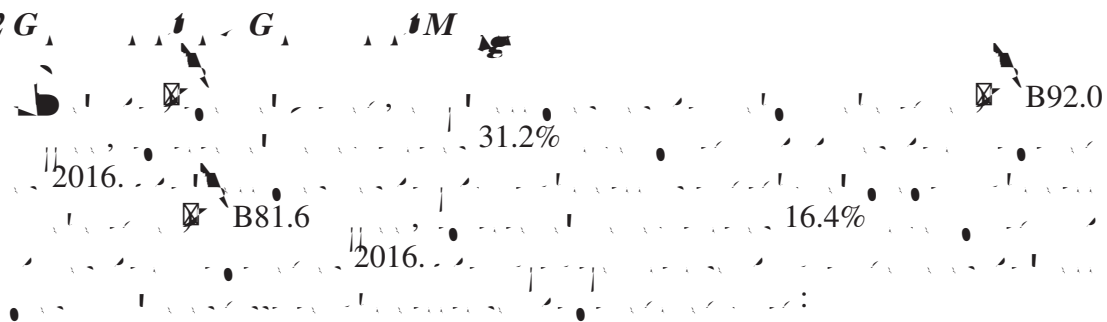
B11.6 31.0%
 2016,
 B2.7

B5.3 21.6%
 2016,

A 54.6% (30, 2016: 51.1%).

B44.0 (30, 2016:
), B41.4
 B2.6 A 2016,
 2016. B37.6
 B6.4

4.1.2 G



F
J 30,
2017 2016

	2017	2016
()	38.6%	43.0%
()	17.9%	17.6%
()	54.6%	51.1%
()	23.9%	66.0%
C	32.5%	37.0%

32.5% (30, 2016: 37.0%),
34.1%, 2.9
2016,

4.1.3

B3.9 (30, 2016: B34.1),

4.1.4

E
B0.4
(30, 2016: B1.0),
56.3% 2016
0.2% (30, 2016: 0.5%),
2016.

4.1.5 A $\dots E$

$\dots (t) (t) 0.533 0 \dots (t) \dots$

4.1.6 $F_{\Delta} (E_{\Delta}) / I_{\Delta} N$

...

	F _Δ (E _Δ) / I _Δ N	J _Δ 30,
	2017	2016
	(MB'000)	(B'000)
...	1,907	3,102
...	(7,730)	9,592
B	(1,691)	
...	(2,725)	(2,777)
...	(198)	(131)
F_Δ (E_Δ) / I_Δ N	(10,437)	9,786

B10.4 2016, B20.2 (B7.7
 B17.3 2016 ; () B1.7

4.1.7 I (L)

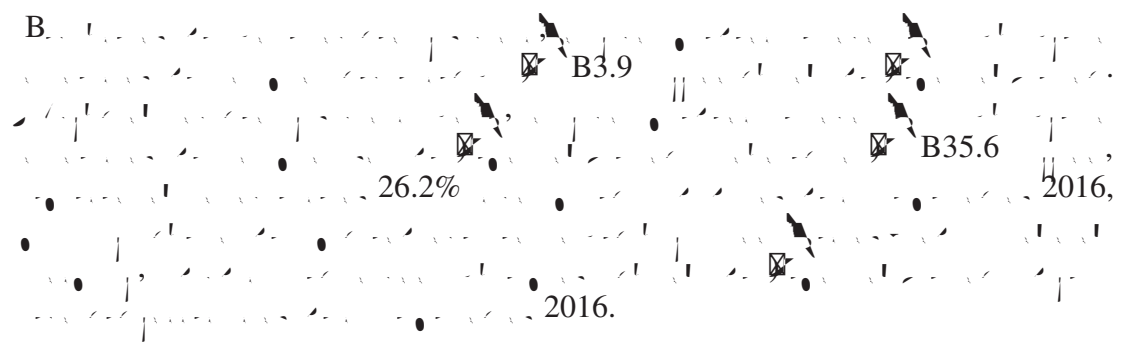
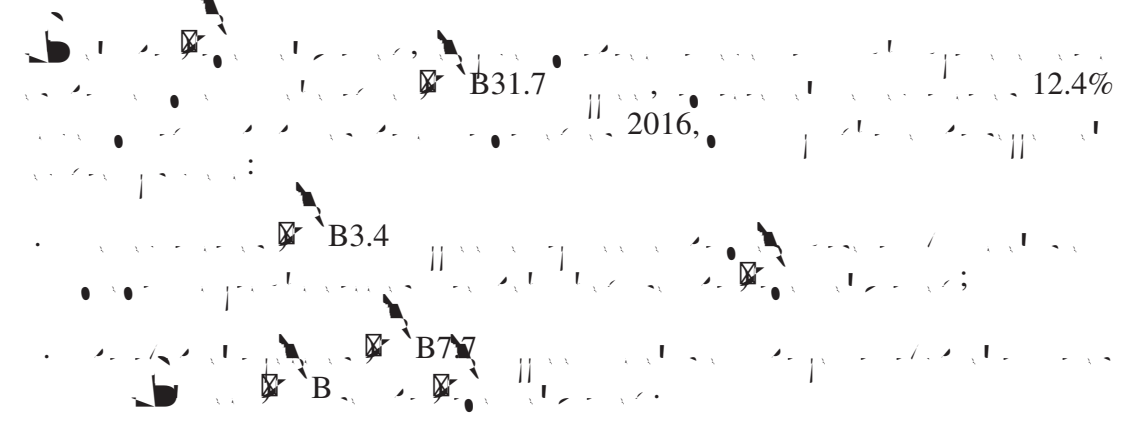
	F 2017 (MB'000)	J 30, 2016 (B'000)
I (L)	(2,852)	(2,200)
	5,243	
	2,391	(2,200)

	B2.4	B2.2
	49.0%	32.7%
	16.3%	B5.2

4.1.8 A I L

	B1.2	B2.8
	137.4%	2016
	1.2%	30, 2016:
	0.6%)	31, 2016,
	A	30, 2017
	2016,	31,
	B10.4	B8.1
	5.4%	5.1%

4.1.11 *C* *I*



4.2 F

4.2.1 I

A 30, 2017, B176.6 ()
31, 2016: B162.8 ()
B14.5 () 31, 2016:
B9.3 (); () B162.1
() 31, 2016: B153.5 (),

B
B

A

(2012) 3-289403

75%

(A) () 6,602.26

(A) () 30,557.34

30, 2017

4.2.2

A 30, 2017, B195.2
() 31, 2016: B142.9 ()

B189.4
32.5% 31, 2016,

2016.

30, 2016: 120

4.2.3

A 30, 2017, B75.8 (31, 2016: B77.0).

4.2.4 I

A 30, 2017, B72.2 (31, 2016: B72.2),

B (3 & 4)

B (3 & 4)

A

(2012) 3-290617, (2012) 3-290604, (2012) 3-290602, (2012) 3-290616, (2012) 3-290595, (2012) 3-290606, (2012) 3-290593 (2012) 3-290607

75%

(A) 3,722.29

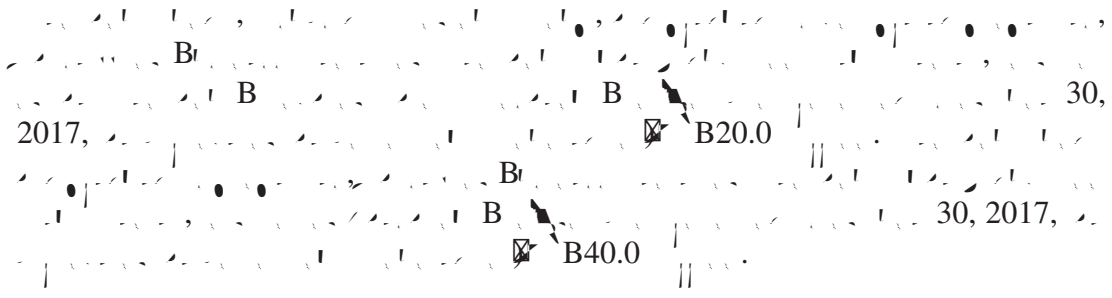
12,854.06

(A) ()

50

(29, 2053),

4.4.3 A



4.4.4 C



4.4.5 F



4.4.6 E



4.4.7 G

A, 30, 2017, () 39.2% (, 31, 2016: 35.1%).

4.4.8 E

A. 30, 2017, 1,589 ()
 31, 2016: 1,348 ()
 B71.3 () 30,
 2016: B55.7 () B97.1

5 CHA E, ALE AND EDEM I N FLI ED EC I IE

6 E IE FIN E IM E L

A
 30, 2017

A
 A (A)
 A (A)

B
 30, 2017 (30, 2016:)

7 C M LIANCE I HCG C DE

9.2 CASH AND CASH EQUIVALENTS

As at 31 December 2017, the Group's cash and cash equivalents are as follows:

9.2.1 Cash and cash equivalents

	As at 31 December	
	2017	2016
	MB	B
	('000,000)	('000,000)
1. Cash	283,136,307	189,680,305
2. Cash equivalents	(191,153,046)	(119,578,600)
3. Cash and cash equivalents	(3,937,078)	(34,107)
4. Cash and cash equivalents	(445,240)	(1,017,758)
5. Cash and cash equivalents	(39,814,343)	(36,359,241)
6. Cash and cash equivalents	(10,436,551)	9,785,791
7. Cash and cash equivalents	(2,823,150)	(1,188,953)
8. Cash and cash equivalents	2,390,872	(2,199,509)
9. Cash and cash equivalents	(2,852,505)	(2,199,509)
10. Cash and cash equivalents	2,692,900	
11. Cash and cash equivalents	39,610,671	39,087,928
12. Cash and cash equivalents	5,377,451	184,815
13. Cash and cash equivalents	(2,668,911)	(2,454,270)
14. Cash and cash equivalents	(95,691)	(84,100)
15. Cash and cash equivalents	42,319,211	36,818,473
16. Cash and cash equivalents	(12,013,726)	(10,531,210)

	2017	2016
	MB	B
	()	()
	<u>30,305,485</u>	26,287,263

4. N

9.2.2 **Income Statement**

	30 June 2017 MB (A)	31 December 2016 B (A)
Current assets		
Trade receivables	360,431,821	496,614,542
Accounts receivable	195,213,586	142,938,440
Accounts payable	56,099,625	54,672,733
Accounts receivable	19,717,584	22,283,987
Other receivables	176,567,409	162,827,694
Other receivables	12,688,704	12,688,704
Current liabilities	820,718,729	892,026,100
Non-current assets		
Property, plant and equipment	50,000,000	50,000,000
Intangible assets	60,198,228	22,429,070
Other non-current assets	72,191,872	72,191,872
Other non-current assets	188,059,052	97,666,540
Other non-current assets	257,092,404	198,066,153
Other non-current assets	153,162,424	125,865,371
Other non-current assets	8,533,389	8,533,389

LIABILITIES AND	30 JUNE 2017	31 DECEMBER 2016
Current liabilities		
Accounts payable	120,000,000	30,000,000
Accounts receivable	80,476,871	43,271,014
Accounts payable - related parties	60,655,362	71,147,900
Accounts payable - other	15,316,095	19,552,350
Accounts payable - government	27,168,560	41,195,655
Accounts payable - other	87,816,113	38,922,694
Accounts payable - other	18,260,000	
Accounts payable - other	17,480,304	54,180,304
	<u>427,173,305</u>	<u>298,269,917</u>
Non-current liabilities		
Accounts payable	148,950,190	149,950,190
Accounts payable	89,463,200	86,738,600
Accounts payable	10,632,800	10,632,800
Accounts payable	13,444,342	16,420,433
	<u>262,490,532</u>	<u>263,742,023</u>
Other liabilities		
Accounts payable	73,040,000	73,040,000
Accounts payable	795,919,512	795,604,861
Accounts payable	18,548,942	18,548,942
Accounts payable	134,640,863	121,190,550
	<u>1,022,149,317</u>	<u>1,008,384,353</u>
	45,572,551	32,985,630
	<u>1,067,721,868</u>	<u>1,041,369,983</u>
TOTAL LIABILITIES AND	<u>1,757,385,705</u>	<u>1,603,381,923</u>

30 J 2017
 MB
 ()

2016
 B
 ()

3.	<p>C</p> <p>14,100,000</p> <hr/> <p>14,100,000</p> <p>90,000,000</p> <p>300,000</p> <hr/> <p>104,400,000</p> <p>(37,700,000)</p> <p>(2,133,206)</p> <p>(2,758,166)</p> <hr/> <p>(42,591,372)</p> <p>N</p> <p>61,808,628</p> <hr/>	<p>2,400,000</p> <hr/> <p>2,400,000</p> <p>50,000,000</p> <hr/> <p>52,400,000</p> <p>(30,000,000)</p> <p>(338,363)</p> <hr/> <p>(30,338,363)</p> <p>22,061,637</p> <hr/>
4.	<p>E</p> <p>(7,312,748)</p> <hr/>	<p>2,896,587</p> <hr/>
5.	<p>N</p> <p>(76,731,721)</p> <hr/> <p>407,163,542</p> <hr/>	<p>(96,088,103)</p> <hr/> <p>368,457,171</p> <hr/>
6.	<p>C</p> <p><u>330,431,821</u></p>	<p><u>272,369,068</u></p>

9.2.4 **Income Statement**

	Euros			New Zealand Dollars		
	2017	2016	2015	2017	2016	2015
Balance at 1 January	73,040,000	795,604,861	18,548,942	121,190,550	32,985,630	1,041,369,983
Income				31,710,313	(1,404,828)	30,305,485
Expenses					14,100,000	14,100,000
Other comprehensive income		206,400				206,400
Other comprehensive expense		108,251			(108,251)	
				(18,260,000)		(18,260,000)
Balance at 30 June	<u>73,040,000</u>	<u>795,919,512</u>	<u>18,548,942</u>	<u>134,640,863</u>	<u>45,572,551</u>	<u>1,067,721,868</u>

Euros are the functional currency of the Group. The financial statements are presented in New Zealand Dollars, which is the reporting currency of the Group.

9.3 Nutritional Cereals, I, F, I, C
A, B, E, C

9.3.3

2017
 2016

2017
 2016

2017
 2016

2017
 2016

	30 J 2017	30 J 2016
	MB	B
	(€)	(€)
	238,108,930	187,817,343
	45,027,377	1,862,962
	<u>283,136,307</u>	<u>189,680,305</u>
	156,885,868	118,945,305
	34,267,178	
	<u>191,153,046</u>	<u>118,945,305</u>

	30 J 2017	2017
	MB	MB
	(€)	(€)
		C
	60,303,304	49,515,173
	166,226,213	102,118,496
	11,579,413	5,252,199
	<u>238,108,930</u>	<u>156,885,868</u>

9.3.5 I

2017
 2016

	2017	2016
MB	()	()
	14,743,399	13,915,240
	(2,729,673)	(3,384,030)
	<u>12,013,726</u>	<u>10,531,210</u>

2017
 2016

	2017	2016
MB	()	()
	42,319,2114	36,818,473

25%

	10,579,803	9,204,618
--	------------	-----------

9.3.6 D

24, 2017,	B	B18,260,000
31, 2016		73,040,000
31, 2016.	A	
30, 2017.		
24, 2016,	B	B18,260,000
31, 2015.		
14, 2016		2015
		14, 2016.

10 DEFINI I N

-A	2016	14, 2017
-A		B
-B	B	(北京怡寧醫院有限公司),
	A	17, 2015
		32.67%
-B	B	(蒼南康寧醫院有限公司),
		15, 2012,
		(成都仁一醫院有限公司),
		29, 2010
		(成都濟宏醫院有限公司)
		28, 2015
		(重慶合川康寧醫院有限公司),
		5, 2015
		40%

(淳安黃鋒康恩醫院)

B
(
: 2120)

A 14

(溫州
怡寧老年醫院有限公司),

(杭州宏瀾信息科技有限公司),

20, 2015 35%

(杭州怡寧醫院有限公司),

At 25, 2016,

A

(臨海康寧醫院有限公司), 2, 2015,

(平陽康寧醫院有限公司), 2, 2015,

(平陽縣長庚醫院有限責任公司).

(浦江黃鋒精神專科醫院)

20.258 0. 1. 3468 0. 11. 9. ,

